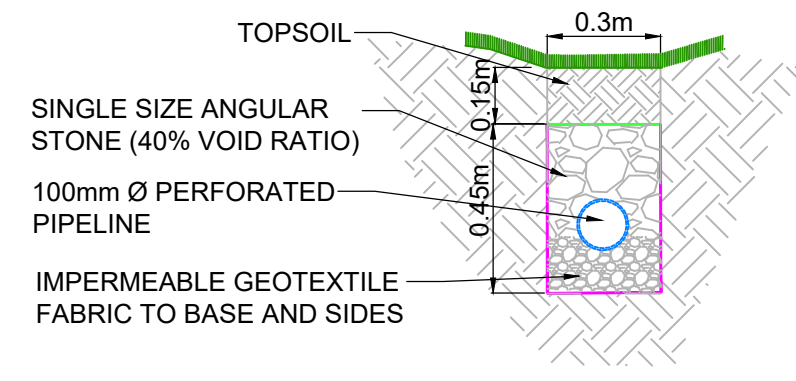
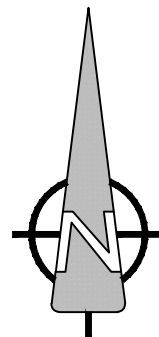
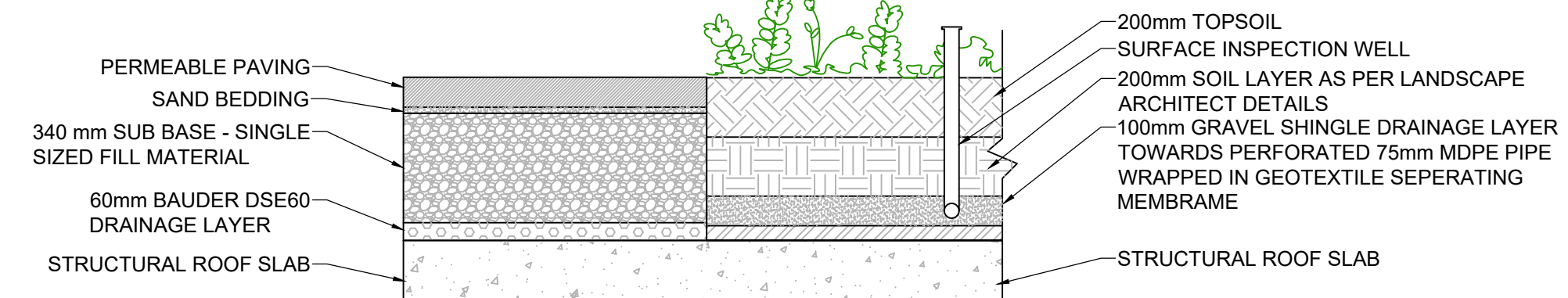


NOTES

- THIS DRAWING IS TO BE READ IN CONJUNCTION WITH ALL OTHER RELEVANT ARCHITECTURAL AND ENGINEERING DRAWINGS, ANY DISCREPANCIES, ERRORS OR OMISSIONS TO BE BROUGHT TO THE ATTENTION OF THE DESIGNER.
- ALL DIMENSIONS TO BE CHECKED BY THE CONTRACTOR ON SITE PRIOR TO COMMENCEMENT OF WORKS.
- AECOM LIMITED TO BE INFORMED BY THE CONTRACTOR OF ANY DISCREPANCIES PRIOR TO THE COMMENCEMENT OF WORKS ON SITE.
- DIMENSIONS OF ALL BOUNDARIES AND ADJOINING ROADS TO BE CHECKED ON SITE PRIOR TO COMMENCEMENT OF WORKS.
- DO NOT SCALE. ALL MEASUREMENTS AND COORDINATES TO BE CHECKED ON SITE.
- THE LOCATION & DEPTH OF SERVICES TO BE CHECKED ON SITE PRIOR TO COMMENCING ANY WORKS.
- MANHOLE COVERS AND FRAMES IN PUBLICLY ACCESSIBLE AREAS SHALL BE HEAVY DUTY CAST IRON, CLASS D400, DOUBLE SEALED AND LOCKABLE TYPE COMPLYING WITH BS EN 124:2015.
- GULLY GRATINGS & FRAMES SHALL COMPLY WITH BS EN 124:2015.
- EXISTING INVERT LEVELS TO BE VERIFIED ON SITE BEFORE COMMENCING CONSTRUCTION.
- SURFACE WATER & FOUL SEWER PIPES LESS THAN 1.2m BELOW THE ROAD SURFACE OR LESS THAN 0.9m IN NON-TRAFFICKED FOOTPATHS AND LANDSCAPE AREAS (WITH AN ABSOLUTE MINIMUM DEPTH OF COVER ABOVE THE EXTERNAL CROWN OF THE PIPE Ø750mm) SHALL BE PROTECTED FROM DAMAGE BY PROVIDING MINIMUM 150mm THICK CONCRETE C16/20 HAUNCH IN ACCORDANCE WITH IS EN 12620.
- ATTENUATION PROPOSALS SHALL BE IN ACCORDANCE WITH THE REQUIREMENTS OF THE LOCAL AUTHORITY.
- CCTV SURVEY TO BE CONDUCTED PRIOR TO COMMENCEMENT OF ANY WORKS TO DETERMINE THE CONDITION AND VERIFY LEVELS OF THE EXISTING FOUL AND SURFACE WATER PIPES/ MANHOLES. ANY SUB-STANDARD OR DEFECTIVE ELEMENTS OF THE EXISTING PIPES/MANHOLES TO BE REPORTED AND CORRECTED.
- ALL SURFACE WATER DRAINAGE DETAILS TO BE IN ACCORDANCE WITH THE GREATER DUBLIN STRATEGIC DRAINAGE STUDY AND THE GREATER DUBLIN REGIONAL CODE OF PRACTICE FOR DRAINAGE WORKS.

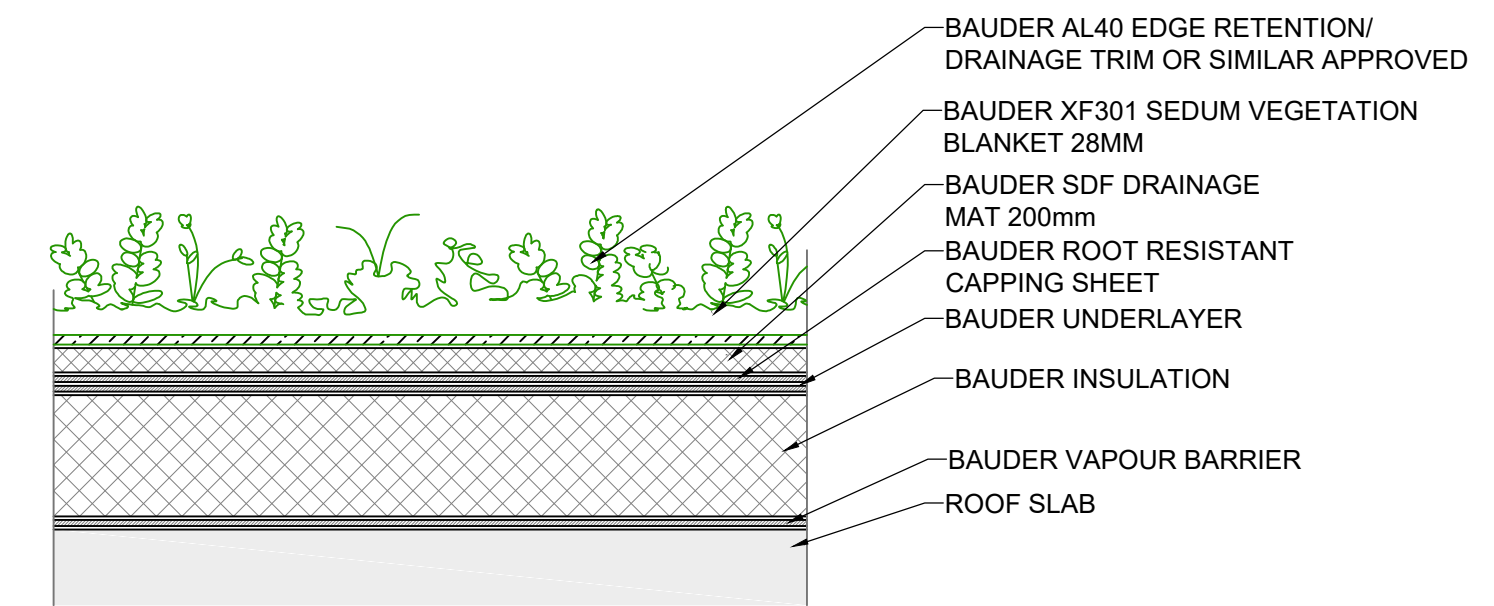


TYPICAL SWALE DETAIL
1:20

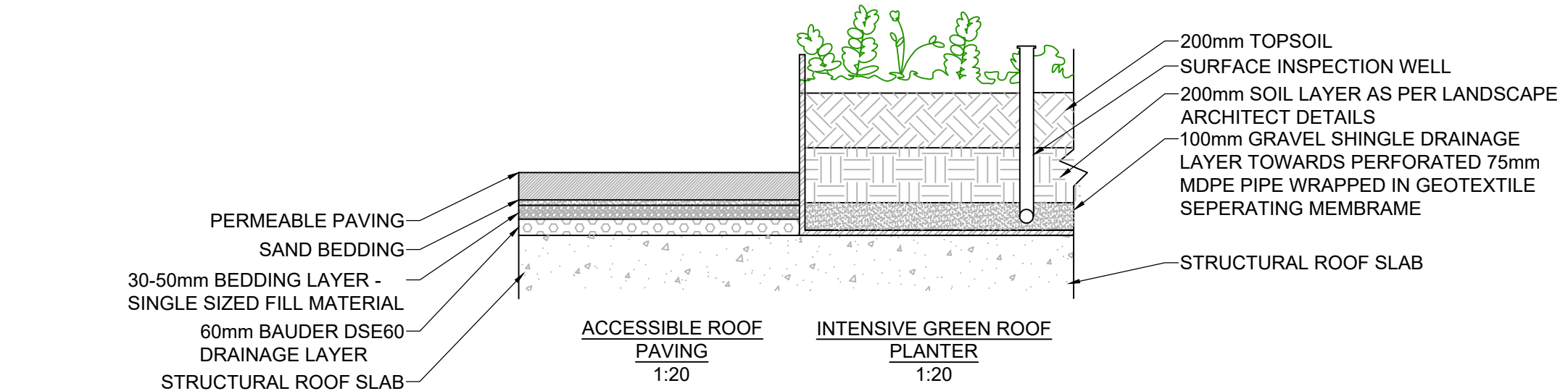


PERMEABLE COUNTRYARD PAVING
1:20

INTENSIVE GREEN ROOF PLANTER
1:20

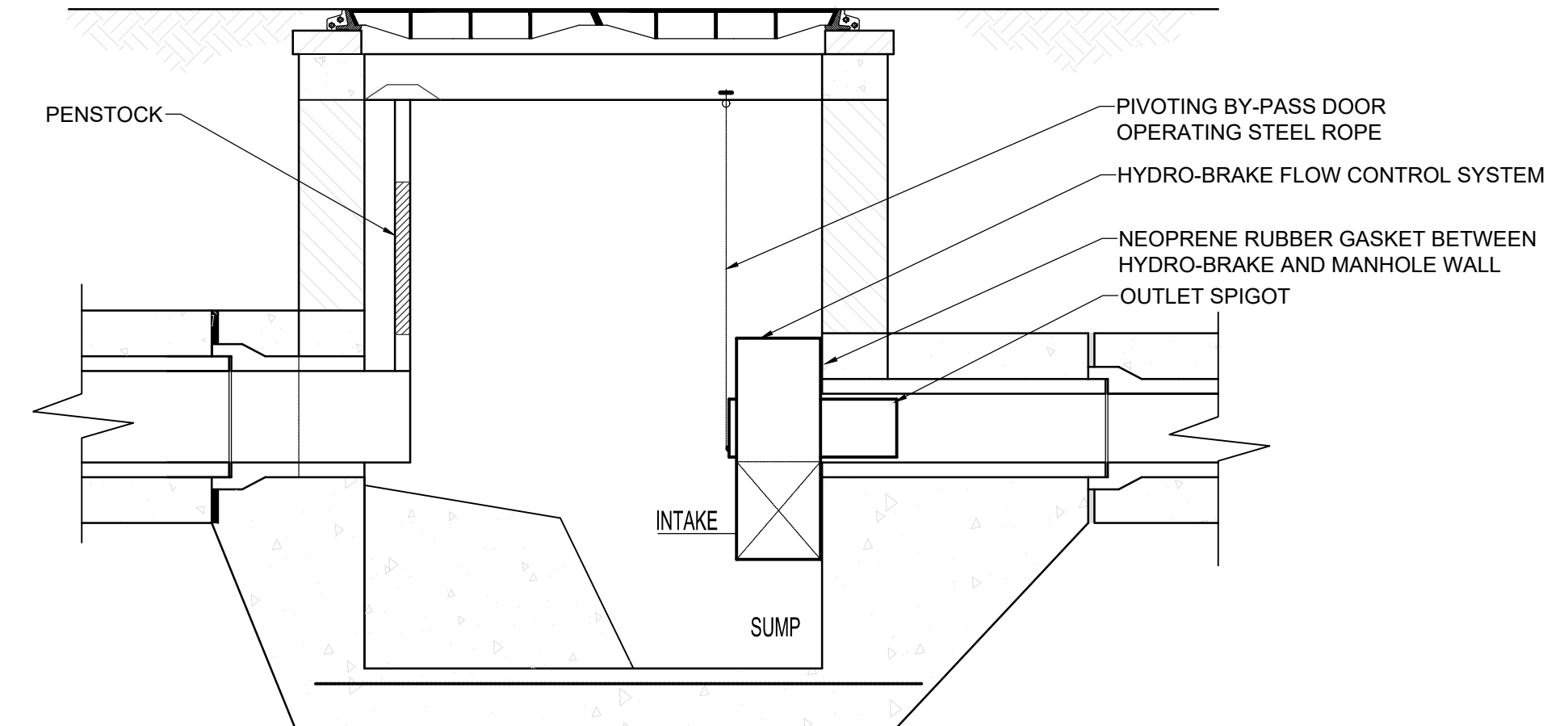


EXTENSIVE GREEN ROOF PLANTER
1:20

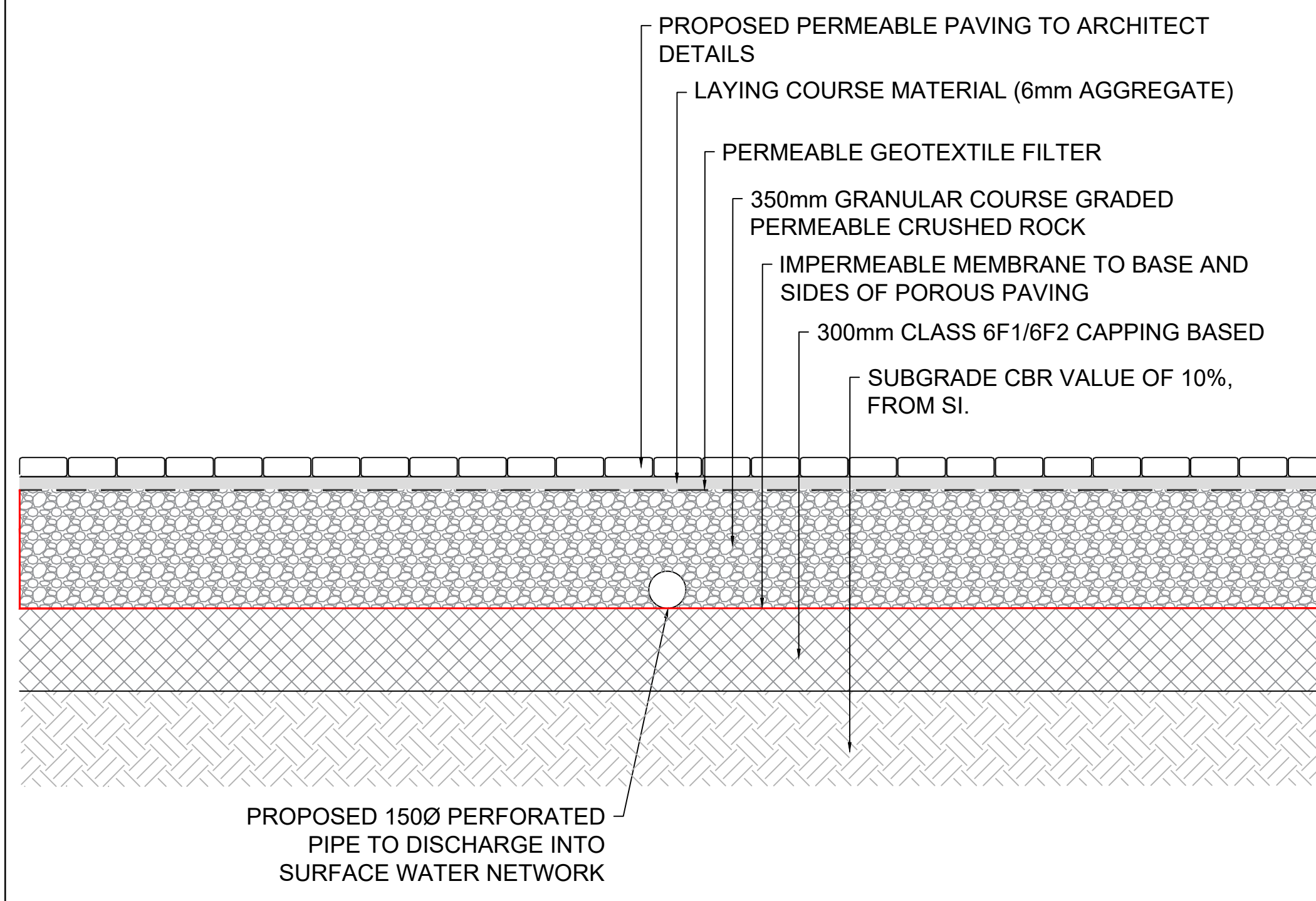


ACCESSIBLE ROOF PAVING
1:20

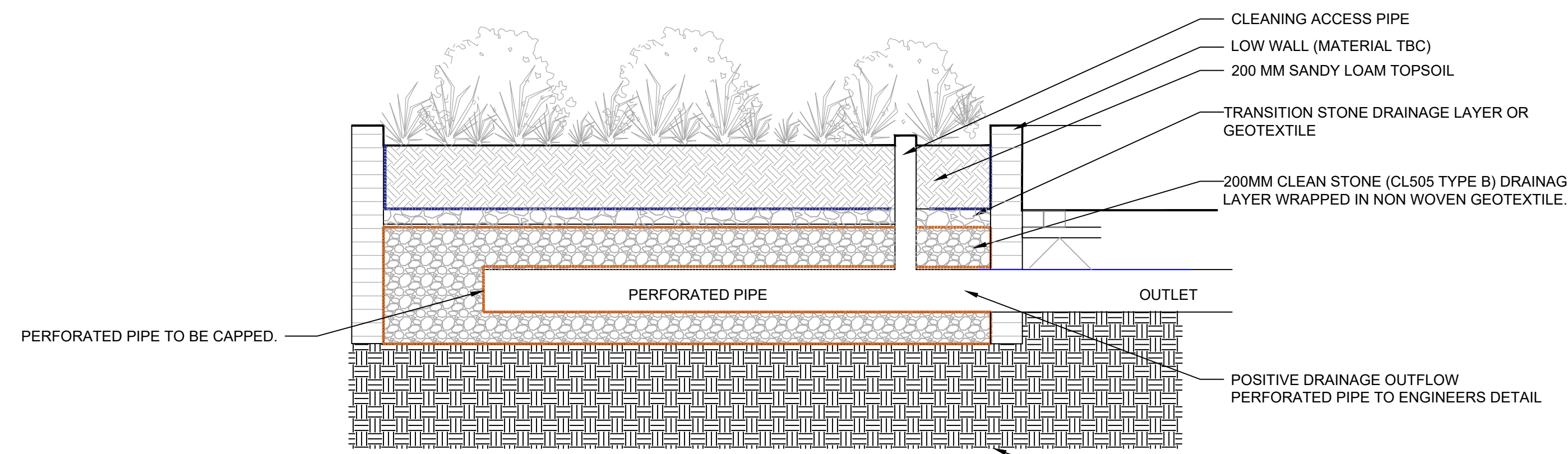
INTENSIVE GREEN ROOF PLANTER
1:20



HYDROBRAKE DETAIL AS PER GSDS



TYPICAL PERMEABLE PAVING



BIORETENTION PLANTER



ISSUE/REVISION

0	18.03.2021	STAGE 3 PLANNING ISSUE
I/R	DATE	DESCRIPTION

PROJECT NUMBER

60626107

SHEET TITLE

PROPOSED SURFACE WATER DRAINAGE DETAILS

SHEET NUMBER

PR461030-ACM-XX-00-DR-CE-10-0503

ISO A1 594mm x 841mm
 Approved: BM
 Checked: CH
 Drawn by: DM
 Project Management Initials:
 Last saved by: KAREL MULLIGAN(2021.03.15) Last Plotter: 2021.04.14
 Filename: \\EU.AECOM\NET.COM\EMIA\UK\IED\B2LUOSS\PR-461030_AVID_SANDYFORD_MARLET\000_CAD_C\SI\004_CE10_WIP\02_SHEETS\PR461030-ACM-XX-00-DR-CE-10-0503.DWG

This drawing has been prepared for the use of AECOM's plant. It may not be used, modified, reproduced or relied upon by third parties, except as agreed by AECOM or as required by law. AECOM accepts no responsibility, and denies any liability, whatsoever, to any party that uses or relies on this drawing without AECOM's express written consent. Do not scale this document. All measurements must be obtained from the stated dimensions.